

Report No.: 18300RC30519401

# Test Report

**Client Name** : Smart Team Holdings Limited

**Client Address** : Flat E, 6/F., China Fen Hin Building,5 Cheung Yue Street,Cheung Sha Wan, Kowloon, Hong Kong.

**Product Name** : MULTI-FUNCTION RED/BLUE LIGHT & MASSAGE HAIR CARE BRUSH

**Report Date** : 2023.12.18

**Shenzhen Anbotek Compliance Laboratory Limited**



**Shenzhen Anbotek Compliance Laboratory Limited**

Address: East of 4/F., Building A, Hourui No.3 Industrial Zone, Xixiang Street, Bao'an District, Shenzhen, Guangdong, China  
Tel: (86) 0755-26066126 Fax: (86) 0755-26066021 Email: service@anbotek.com

 Hotline  
400-003-0500  
www.anbotek.com.cn



# Test Report

Report No.: 18300RC30519401

Page 1 of 40

**Applicant** : Smart Team Holdings Limited  
**Address** : Flat E, 6/F., China Fen Hin Building,5 Cheung Yue Street,Cheung Sha Wan, Kowloon, Hong Kong.

**The submitted sample and sample information was/were submitted and identified by/on the behalf of the client**

**Sample Name** : MULTI-FUNCTION RED/BLUE LIGHT & MASSAGE HAIR CARE BRUSH

**Test Model No.** : 2308

**Manufacturer** : ShenZhen XinJunMeng Energy Technology Co. Ltd.

**Sample Received Date** : 2023.11.20

**Testing Period** : 2023.11.21~2023.12.13

**Test Requested** : As specified by client, to test the Lead(Pb), Cadmium(Cd), Mercury(Hg), Hexavalent Chromium(Cr(VI)), Polybrominated Biphenyl(PBBs), Polybrominated Diphenyl Ethers (PBDEs), Diisobutyl phthalate (DIBP), Dibutyl phthalate(DBP), Benzyl butyl phthalate(BBP), Di-2-ethylhexyl phthalate(DEHP) in the selected material of the submitted sample in accordance with the RoHS Directive 2011/65/EU and amendment Commission Delegated Directive (EU) 2015/863 with effective from 22 July 2019.

**Test Method:** Please refer to the following page(s).

**Test Result(s):** Please refer to the following page(s).

Edited by Xupeng Qi Reviewed by Zoe Zheng Authorized Signatory Jianjun



# Test Report

Report No.: 18300RC30519401

Page 2 of 40

## Test Method:

### A. XRF Screening Test

XRF screening limits in mg/kg for regulated elements according to IEC 62321-3-1:2013.

Element	Limit of IEC 62321-3-1:2013 Unit (mg/kg)		
	Polymers	Metals	Composite material
Cd	$BL \leq (70-3\sigma) < X < (130+3\sigma) \leq OL$	$BL \leq (70-3\sigma) < X < (130+3\sigma) \leq OL$	$LOD < X < (150+3\sigma) \leq OL$
Pb	$BL \leq (700-3\sigma) < X < (1300+3\sigma) \leq OL$	$BL \leq (700-3\sigma) < X < (1300+3\sigma) \leq OL$	$BL \leq (500-3\sigma) < X < (1500+3\sigma) \leq OL$
Hg	$BL \leq (700-3\sigma) < X < (1300+3\sigma) \leq OL$	$BL \leq (700-3\sigma) < X < (1300+3\sigma) \leq OL$	$BL \leq (500-3\sigma) < X < (1500+3\sigma) \leq OL$
Br	$BL \leq (300-3\sigma) < X$	N.A.	$BL \leq (250-3\sigma) < X$
Cr	$BL \leq (700-3\sigma) < X$	$BL \leq (700-3\sigma) < X$	$BL \leq (500-3\sigma) < X$

### Note:

-N.A. = Not Applicable

-BL = Under the XRF screening limit

-OL = Further chemical test will be conducted while result is above the screening limit

-X= The symbol "X" marks the region where further investigation is necessary

-3 $\sigma$ = The reproducibility of analytical instruments

-LOD= Detection limit

### B. Chemical Test

Test Item(s)	Test Method	Measured Equipment(s)	MDL	Limit
Lead (Pb)	IEC 62321-5:2013	ICP-OES	2 mg/kg	1000 mg/kg
Cadmium (Cd)	IEC 62321-5:2013		2 mg/kg	100 mg/kg
Mercury (Hg)	IEC 62321-4:2013+AMD1:2017		2 mg/kg	1000 mg/kg
Hexavalent Chromium Cr(VI)	IEC 62321-7-1:2015	UV-VIS	0.10 $\mu$ g/cm <sup>2</sup>	---
	IEC 62321-7-2:2017		8 mg/kg	1000 mg/kg
Polybrominated Biphenyls (PBBs)	IEC 62321-6:2015	GC-MS	5 mg/kg	1000 mg/kg
Polybrominated Diphenyl Ethers (PBDEs)	IEC 62321-6:2015		5 mg/kg	1000 mg/kg
Phthalates (DIBP, DBP, BBP, DEHP)	IEC 62321-8:2017		50 mg/kg	1000 mg/kg





# Test Report

Report No.: 18300RC30519401

Page 3 of 40

## Test Results:

Sample No.	Sample Description	Tested Items	XRF Screening Test Unit (mg/kg)	Chemical Test Unit (mg/kg)	Conclusion
1	Black plastic block	Pb	BL	/	PASS
		Cd	BL	/	
		Hg	BL	/	
		Cr(Cr(VI) )	BL	/	
		Br(PBBs&PBDEs)	BL	/	
		DBP	N.A.	N.D.	
		BBP	N.A.	N.D.	
		DEHP	N.A.	N.D.	
2	Black plastic shell	Pb	BL	/	PASS
		Cd	BL	/	
		Hg	BL	/	
		Cr(Cr(VI) )	BL	/	
		Br(PBBs&PBDEs)	BL	/	
		DBP	N.A.	N.D.	
		BBP	N.A.	N.D.	
		DEHP	N.A.	N.D.	
3	Translucent plastic block	Pb	BL	/	PASS
		Cd	BL	/	
		Hg	BL	/	
		Cr(Cr(VI) )	BL	/	
		Br(PBBs&PBDEs)	BL	/	
		DBP	N.A.	N.D.	
		BBP	N.A.	N.D.	
		DEHP	N.A.	N.D.	
DIBP	N.A.	N.D.			



# Test Report

Report No.: 18300RC30519401

Page 4 of 40

Sample No.	Sample Description	Tested Items	XRF Screening Test Unit (mg/kg)	Chemical Test Unit (mg/kg)	Conclusion
4	Black plastic button	Pb	BL	/	PASS
		Cd	BL	/	
		Hg	BL	/	
		Cr(Cr(VI) )	BL	/	
		Br(PBBs&PBDEs)	BL	/	
		DBP	N.A.	N.D.	
		BBP	N.A.	N.D.	
		DEHP	N.A.	N.D.	
		DIBP	N.A.	N.D.	
5	White rubber block	Pb	BL	/	PASS
		Cd	BL	/	
		Hg	BL	/	
		Cr(Cr(VI) )	BL	/	
		Br(PBBs&PBDEs)	BL	/	
		DBP	N.A.	N.D.	
		BBP	N.A.	N.D.	
		DEHP	N.A.	N.D.	
		DIBP	N.A.	N.D.	
6	Copper-colored metal block	Pb	OL	29150*	PASS
		Cd	BL	/	
		Hg	BL	/	
		Cr(Cr(VI) )	BL	/	
		Br(PBBs&PBDEs)	N.A.	/	
		DBP	N.A.	/	
		BBP	N.A.	/	
		DEHP	N.A.	/	
		DIBP	N.A.	/	



# Test Report

Report No.: 18300RC30519401

Page 5 of 40

Sample No.	Sample Description	Tested Items	XRF Screening Test Unit (mg/kg)	Chemical Test Unit (mg/kg)	Conclusion
7	Translucent plastic block	Pb	BL	/	PASS
		Cd	BL	/	
		Hg	BL	/	
		Cr(Cr(VI) )	BL	/	
		Br(PBBs&PBDEs)	BL	/	
		DBP	N.A.	N.D.	
		BBP	N.A.	N.D.	
		DEHP	N.A.	N.D.	
8	White plastic connector	Pb	BL	/	PASS
		Cd	BL	/	
		Hg	BL	/	
		Cr(Cr(VI) )	BL	/	
		Br(PBBs&PBDEs)	BL	/	
		DBP	N.A.	N.D.	
		BBP	N.A.	N.D.	
		DEHP	N.A.	N.D.	
9	Copper-colored metal electrical contact	Pb	OL	33160*	PASS
		Cd	BL	/	
		Hg	BL	/	
		Cr(Cr(VI) )	BL	/	
		Br(PBBs&PBDEs)	N.A.	/	
		DBP	N.A.	/	
		BBP	N.A.	/	
		DEHP	N.A.	/	
DIBP	N.A.	/			





# Test Report

Report No.: 18300RC30519401

Page 6 of 40

Sample No.	Sample Description	Tested Items	XRF Screening Test Unit (mg/kg)	Chemical Test Unit (mg/kg)	Conclusion
10	Black plastic jacket	Pb	BL	/	PASS
		Cd	BL	/	
		Hg	BL	/	
		Cr(Cr(VI) )	BL	/	
		Br(PBBs&PBDEs)	BL	/	
		DBP	N.A.	722	
		BBP	N.A.	N.D.	
		DEHP	N.A.	N.D.	
		DIBP	N.A.	N.D.	
11	Silvery metal screw	Pb	BL	/	PASS
		Cd	BL	/	
		Hg	BL	/	
		Cr(Cr(VI) )	BL	/	
		Br(PBBs&PBDEs)	N.A.	/	
		DBP	N.A.	/	
		BBP	N.A.	/	
		DEHP	N.A.	/	
		DIBP	N.A.	/	
12	Silvery metal pin	Pb	BL	/	PASS
		Cd	BL	/	
		Hg	BL	/	
		Cr(Cr(VI) )	BL	/	
		Br(PBBs&PBDEs)	N.A.	/	
		DBP	N.A.	/	
		BBP	N.A.	/	
		DEHP	N.A.	/	
		DIBP	N.A.	/	



# Test Report

Report No.: 18300RC30519401

Page 7 of 40

Sample No.	Sample Description	Tested Items	XRF Screening Test Unit (mg/kg)	Chemical Test Unit (mg/kg)	Conclusion
13	White plastic connector	Pb	BL	/	PASS
		Cd	BL	/	
		Hg	BL	/	
		Cr(Cr(VI) )	BL	/	
		Br(PBBs&PBDEs)	BL	/	
		DBP	N.A.	N.D.	
		BBP	N.A.	N.D.	
		DEHP	N.A.	N.D.	
14	White PCB board	Pb	BL	/	PASS
		Cd	BL	/	
		Hg	BL	/	
		Cr(Cr(VI) )	BL	/	
		Br(PBBs&PBDEs)	BL	/	
		DBP	N.A.	N.D.	
		BBP	N.A.	N.D.	
		DEHP	N.A.	N.D.	
15	Silvery metal pin	Pb	BL	/	PASS
		Cd	BL	/	
		Hg	BL	/	
		Cr(Cr(VI) )	BL	/	
		Br(PBBs&PBDEs)	N.A.	/	
		DBP	N.A.	/	
		BBP	N.A.	/	
		DEHP	N.A.	/	
		DIBP	N.A.	/	





# Test Report

Report No.: 18300RC30519401

Page 8 of 40

Sample No.	Sample Description	Tested Items	XRF Screening Test Unit (mg/kg)	Chemical Test Unit (mg/kg)	Conclusion
16	Beige plastic connector	Pb	BL	/	PASS
		Cd	BL	/	
		Hg	BL	/	
		Cr(Cr(VI) )	BL	/	
		Br(PBBs&PBDEs)	BL	/	
		DBP	N.A.	N.D.	
		BBP	N.A.	N.D.	
		DEHP	N.A.	N.D.	
17	Chip diode	Pb	BL	/	PASS
		Cd	BL	/	
		Hg	BL	/	
		Cr(Cr(VI) )	BL	/	
		Br(PBBs&PBDEs)	BL	/	
		DBP	N.A.	N.D.	
		BBP	N.A.	N.D.	
		DEHP	N.A.	N.D.	
18	Chip capacitor	Pb	BL	/	PASS
		Cd	BL	/	
		Hg	BL	/	
		Cr(Cr(VI) )	BL	/	
		Br(PBBs&PBDEs)	BL	/	
		DBP	N.A.	N.D.	
		BBP	N.A.	N.D.	
		DEHP	N.A.	N.D.	
		DIBP	N.A.	N.D.	



# Test Report

Report No.: 18300RC30519401

Page 9 of 40

Sample No.	Sample Description	Tested Items	XRF Screening Test Unit (mg/kg)	Chemical Test Unit (mg/kg)	Conclusion
19	Chip resistor	Pb	BL	/	PASS
		Cd	BL	/	
		Hg	BL	/	
		Cr(Cr(VI) )	X	N.D.	
		Br(PBBs&PBDEs)	BL	/	
		DBP	N.A.	N.D.	
		BBP	N.A.	N.D.	
		DEHP	N.A.	N.D.	
20	Chip inductor	Pb	BL	/	PASS
		Cd	BL	/	
		Hg	BL	/	
		Cr(Cr(VI) )	X	N.D.	
		Br(PBBs&PBDEs)	BL	/	
		DBP	N.A.	N.D.	
		BBP	N.A.	N.D.	
		DEHP	N.A.	N.D.	
21	IC	Pb	BL	/	PASS
		Cd	BL	/	
		Hg	BL	/	
		Cr(Cr(VI) )	BL	/	
		Br(PBBs&PBDEs)	BL	/	
		DBP	N.A.	N.D.	
		BBP	N.A.	N.D.	
		DEHP	N.A.	N.D.	
DIBP	N.A.	N.D.			



# Test Report

Report No.: 18300RC30519401

Page 10 of 40

Sample No.	Sample Description	Tested Items	XRF Screening Test Unit (mg/kg)	Chemical Test Unit (mg/kg)	Conclusion
22	Chip capacitor	Pb	BL	/	PASS
		Cd	BL	/	
		Hg	BL	/	
		Cr(Cr(VI) )	BL	/	
		Br(PBBs&PBDEs)	BL	/	
		DBP	N.A.	N.D.	
		BBP	N.A.	N.D.	
		DEHP	N.A.	N.D.	
23	Chip capacitor	Pb	BL	/	PASS
		Cd	BL	/	
		Hg	BL	/	
		Cr(Cr(VI) )	BL	/	
		Br(PBBs&PBDEs)	BL	/	
		DBP	N.A.	N.D.	
		BBP	N.A.	N.D.	
		DEHP	N.A.	N.D.	
24	Chip resistor	Pb	BL	/	PASS
		Cd	BL	/	
		Hg	BL	/	
		Cr(Cr(VI) )	BL	/	
		Br(PBBs&PBDEs)	BL	/	
		DBP	N.A.	N.D.	
		BBP	N.A.	N.D.	
		DEHP	N.A.	N.D.	
		DIBP	N.A.	N.D.	





# Test Report

Report No.: 18300RC30519401

Page 11 of 40

Sample No.	Sample Description	Tested Items	XRF Screening Test Unit (mg/kg)	Chemical Test Unit (mg/kg)	Conclusion
25	Chip audion	Pb	BL	/	PASS
		Cd	BL	/	
		Hg	BL	/	
		Cr(Cr(VI) )	BL	/	
		Br(PBBs&PBDEs)	BL	/	
		DBP	N.A.	N.D.	
		BBP	N.A.	N.D.	
		DEHP	N.A.	N.D.	
26	Chip resistor	Pb	BL	/	PASS
		Cd	BL	/	
		Hg	BL	/	
		Cr(Cr(VI) )	X	N.D.	
		Br(PBBs&PBDEs)	BL	/	
		DBP	N.A.	N.D.	
		BBP	N.A.	N.D.	
		DEHP	N.A.	N.D.	
27	Chip resistor	Pb	BL	/	PASS
		Cd	BL	/	
		Hg	BL	/	
		Cr(Cr(VI) )	X	N.D.	
		Br(PBBs&PBDEs)	BL	/	
		DBP	N.A.	N.D.	
		BBP	N.A.	N.D.	
		DEHP	N.A.	N.D.	
DIBP	N.A.	N.D.			



# Test Report

Report No.: 18300RC30519401

Page 12 of 40

Sample No.	Sample Description	Tested Items	XRF Screening Test Unit (mg/kg)	Chemical Test Unit (mg/kg)	Conclusion
28	LED	Pb	BL	/	PASS
		Cd	BL	/	
		Hg	BL	/	
		Cr(Cr(VI) )	BL	/	
		Br(PBBs&PBDEs)	BL	/	
		DBP	N.A.	N.D.	
		BBP	N.A.	N.D.	
		DEHP	N.A.	N.D.	
29	Chip capacitor	Pb	BL	/	PASS
		Cd	BL	/	
		Hg	BL	/	
		Cr(Cr(VI) )	BL	/	
		Br(PBBs&PBDEs)	BL	/	
		DBP	N.A.	N.D.	
		BBP	N.A.	N.D.	
		DEHP	N.A.	N.D.	
30	Chip resistor	Pb	BL	/	PASS
		Cd	BL	/	
		Hg	BL	/	
		Cr(Cr(VI) )	X	N.D.	
		Br(PBBs&PBDEs)	BL	/	
		DBP	N.A.	N.D.	
		BBP	N.A.	N.D.	
		DEHP	N.A.	N.D.	
DIBP	N.A.	N.D.			



# Test Report

Report No.: 18300RC30519401

Page 13 of 40

Sample No.	Sample Description	Tested Items	XRF Screening Test Unit (mg/kg)	Chemical Test Unit (mg/kg)	Conclusion
31▼	Red plastic jacket	Pb	BL	/	PASS
		Cd	BL	/	
		Hg	BL	/	
		Cr(Cr(VI) )	BL	/	
		Br(PBBs&PBDEs)	BL	/	
		DBP	N.A.	N.D.	
		BBP	N.A.	N.D.	
		DEHP	N.A.	N.D.	
32	Chip audion	Pb	BL	/	PASS
		Cd	BL	/	
		Hg	BL	/	
		Cr(Cr(VI) )	BL	/	
		Br(PBBs&PBDEs)	BL	/	
		DBP	N.A.	N.D.	
		BBP	N.A.	N.D.	
		DEHP	N.A.	N.D.	
33	Beige plastic block	Pb	BL	/	PASS
		Cd	BL	/	
		Hg	BL	/	
		Cr(Cr(VI) )	BL	/	
		Br(PBBs&PBDEs)	BL	/	
		DBP	N.A.	N.D.	
		BBP	N.A.	N.D.	
		DEHP	N.A.	N.D.	
DIBP	N.A.	N.D.			





# Test Report

Report No.: 18300RC30519401

Page 14 of 40

Sample No.	Sample Description	Tested Items	XRF Screening Test Unit (mg/kg)	Chemical Test Unit (mg/kg)	Conclusion
34	Silvery metal pin	Pb	BL	/	PASS
		Cd	BL	/	
		Hg	BL	/	
		Cr(Cr(VI) )	BL	/	
		Br(PBBs&PBDEs)	N.A.	/	
		DBP	N.A.	/	
		BBP	N.A.	/	
		DEHP	N.A.	/	
35	IC	Pb	BL	/	PASS
		Cd	BL	/	
		Hg	BL	/	
		Cr(Cr(VI) )	BL	/	
		Br(PBBs&PBDEs)	BL	/	
		DBP	N.A.	N.D.	
		BBP	N.A.	N.D.	
		DEHP	N.A.	N.D.	
36	Silvery metal pin	Pb	BL	/	PASS
		Cd	BL	/	
		Hg	BL	/	
		Cr(Cr(VI) )	BL	/	
		Br(PBBs&PBDEs)	N.A.	/	
		DBP	N.A.	/	
		BBP	N.A.	/	
		DEHP	N.A.	/	
DIBP	N.A.	/			



# Test Report

Report No.: 18300RC30519401

Page 15 of 40

Sample No.	Sample Description	Tested Items	XRF Screening Test Unit (mg/kg)	Chemical Test Unit (mg/kg)	Conclusion
37	Chip capacitor	Pb	BL	/	PASS
		Cd	BL	/	
		Hg	BL	/	
		Cr(Cr(VI) )	BL	/	
		Br(PBBs&PBDEs)	BL	/	
		DBP	N.A.	N.D.	
		BBP	N.A.	N.D.	
		DEHP	N.A.	N.D.	
38	Black heat shrink sleeve	Pb	BL	/	PASS
		Cd	BL	/	
		Hg	BL	/	
		Cr(Cr(VI) )	BL	/	
		Br(PBBs&PBDEs)	BL	/	
		DBP	N.A.	N.D.	
		BBP	N.A.	N.D.	
		DEHP	N.A.	N.D.	
39	Red plastic jacket	Pb	BL	/	PASS
		Cd	BL	/	
		Hg	BL	/	
		Cr(Cr(VI) )	BL	/	
		Br(PBBs&PBDEs)	BL	/	
		DBP	N.A.	784	
		BBP	N.A.	N.D.	
		DEHP	N.A.	N.D.	
DIBP	N.A.	N.D.			



# Test Report

Report No.: 18300RC30519401

Page 16 of 40

Sample No.	Sample Description	Tested Items	XRF Screening Test Unit (mg/kg)	Chemical Test Unit (mg/kg)	Conclusion
40	Black plastic jacket	Pb	BL	/	PASS
		Cd	BL	/	
		Hg	BL	/	
		Cr(Cr(VI) )	BL	/	
		Br(PBBs&PBDEs)	BL	/	
		DBP	N.A.	N.D.	
		BBP	N.A.	N.D.	
		DEHP	N.A.	N.D.	
41	Silvery metal cable core	Pb	BL	/	PASS
		Cd	BL	/	
		Hg	BL	/	
		Cr(Cr(VI) )	BL	/	
		Br(PBBs&PBDEs)	N.A.	/	
		DBP	N.A.	/	
		BBP	N.A.	/	
		DEHP	N.A.	/	
42	Chip resistor	Pb	BL	/	PASS
		Cd	BL	/	
		Hg	BL	/	
		Cr(Cr(VI) )	BL	/	
		Br(PBBs&PBDEs)	BL	/	
		DBP	N.A.	N.D.	
		BBP	N.A.	N.D.	
		DEHP	N.A.	N.D.	
DIBP	N.A.	N.D.			





# Test Report

Report No.: 18300RC30519401

Page 17 of 40

Sample No.	Sample Description	Tested Items	XRF Screening Test Unit (mg/kg)	Chemical Test Unit (mg/kg)	Conclusion
43	Silvery metal soldering tin	Pb	BL	/	PASS
		Cd	BL	/	
		Hg	BL	/	
		Cr(Cr(VI) )	BL	/	
		Br(PBBs&PBDEs)	N.A.	/	
		DBP	N.A.	/	
		BBP	N.A.	/	
		DEHP	N.A.	/	
44	Black plastic jacket	Pb	BL	/	PASS
		Cd	BL	/	
		Hg	BL	/	
		Cr(Cr(VI) )	BL	/	
		Br(PBBs&PBDEs)	BL	/	
		DBP	N.A.	N.D.	
		BBP	N.A.	N.D.	
		DEHP	N.A.	N.D.	
45	Silvery metal pin	Pb	BL	/	PASS
		Cd	BL	/	
		Hg	BL	/	
		Cr(Cr(VI) )	BL	/	
		Br(PBBs&PBDEs)	N.A.	/	
		DBP	N.A.	/	
		BBP	N.A.	/	
		DEHP	N.A.	/	
		DIBP	N.A.	/	



# Test Report

Report No.: 18300RC30519401

Page 18 of 40

Sample No.	Sample Description	Tested Items	XRF Screening Test Unit (mg/kg)	Chemical Test Unit (mg/kg)	Conclusion
46	Black inner plastic	Pb	BL	/	PASS
		Cd	BL	/	
		Hg	BL	/	
		Cr(Cr(VI) )	BL	/	
		Br(PBBs&PBDEs)	BL	/	
		DBP	N.A.	N.D.	
		BBP	N.A.	N.D.	
		DEHP	N.A.	N.D.	
47	Silvery metal socket	Pb	BL	/	PASS
		Cd	BL	/	
		Hg	BL	/	
		Cr(Cr(VI) )	X	Negative	
		Br(PBBs&PBDEs)	N.A.	/	
		DBP	N.A.	/	
		BBP	N.A.	/	
		DEHP	N.A.	/	
48	Silvery metal sheet	Pb	BL	/	PASS
		Cd	BL	/	
		Hg	BL	/	
		Cr(Cr(VI) )	X	Negative	
		Br(PBBs&PBDEs)	N.A.	/	
		DBP	N.A.	/	
		BBP	N.A.	/	
		DEHP	N.A.	/	
		DIBP	N.A.	/	



# Test Report

Report No.: 18300RC30519401

Page 19 of 40

Sample No.	Sample Description	Tested Items	XRF Screening Test Unit (mg/kg)	Chemical Test Unit (mg/kg)	Conclusion
49	Silvery metal sheet	Pb	BL	/	PASS
		Cd	BL	/	
		Hg	BL	/	
		Cr(Cr(VI) )	X	Negative	
		Br(PBBs&PBDEs)	N.A.	/	
		DBP	N.A.	/	
		BBP	N.A.	/	
		DEHP	N.A.	/	
50	Copper-colored metal button	Pb	BL	/	PASS
		Cd	BL	/	
		Hg	BL	/	
		Cr(Cr(VI) )	BL	/	
		Br(PBBs&PBDEs)	N.A.	/	
		DBP	N.A.	/	
		BBP	N.A.	/	
		DEHP	N.A.	/	
51	Yellow translucent plastic tape	Pb	BL	/	PASS
		Cd	BL	/	
		Hg	BL	/	
		Cr(Cr(VI) )	BL	/	
		Br(PBBs&PBDEs)	BL	/	
		DBP	N.A.	N.D.	
		BBP	N.A.	N.D.	
		DEHP	N.A.	N.D.	
DIBP	N.A.	N.D.			





# Test Report

Report No.: 18300RC30519401

Page 20 of 40

Sample No.	Sample Description	Tested Items	XRF Screening Test Unit (mg/kg)	Chemical Test Unit (mg/kg)	Conclusion
52	IC	Pb	BL	/	PASS
		Cd	BL	/	
		Hg	BL	/	
		Cr(Cr(VI) )	BL	/	
		Br(PBBs&PBDEs)	BL	/	
		DBP	N.A.	N.D.	
		BBP	N.A.	N.D.	
		DEHP	N.A.	N.D.	
53	Silvery metal pin	Pb	BL	/	PASS
		Cd	BL	/	
		Hg	BL	/	
		Cr(Cr(VI) )	BL	/	
		Br(PBBs&PBDEs)	N.A.	/	
		DBP	N.A.	/	
		BBP	N.A.	/	
		DEHP	N.A.	/	
54	Chip resistor	Pb	BL	/	PASS
		Cd	BL	/	
		Hg	BL	/	
		Cr(Cr(VI) )	BL	/	
		Br(PBBs&PBDEs)	BL	/	
		DBP	N.A.	N.D.	
		BBP	N.A.	N.D.	
		DEHP	N.A.	N.D.	
		DIBP	N.A.	N.D.	



# Test Report

Report No.: 18300RC30519401

Page 21 of 40

Sample No.	Sample Description	Tested Items	XRF Screening Test Unit (mg/kg)	Chemical Test Unit (mg/kg)	Conclusion
55	Silvery metal electrical contact	Pb	BL	/	PASS
		Cd	BL	/	
		Hg	BL	/	
		Cr(Cr(VI) )	BL	/	
		Br(PBBs&PBDEs)	N.A.	/	
		DBP	N.A.	/	
		BBP	N.A.	/	
		DEHP	N.A.	/	
56	Chip capacitor	Pb	BL	/	PASS
		Cd	BL	/	
		Hg	BL	/	
		Cr(Cr(VI) )	BL	/	
		Br(PBBs&PBDEs)	BL	/	
		DBP	N.A.	N.D.	
		BBP	N.A.	N.D.	
		DEHP	N.A.	N.D.	
57	Chip diode	Pb	BL	/	PASS
		Cd	BL	/	
		Hg	BL	/	
		Cr(Cr(VI) )	BL	/	
		Br(PBBs&PBDEs)	BL	/	
		DBP	N.A.	N.D.	
		BBP	N.A.	N.D.	
		DEHP	N.A.	N.D.	
		DIBP	N.A.	N.D.	



# Test Report

Report No.: 18300RC30519401

Page 22 of 40

Sample No.	Sample Description	Tested Items	XRF Screening Test Unit (mg/kg)	Chemical Test Unit (mg/kg)	Conclusion
58	Chip resistor	Pb	BL	/	PASS
		Cd	BL	/	
		Hg	BL	/	
		Cr(Cr(VI) )	BL	/	
		Br(PBBs&PBDEs)	BL	/	
		DBP	N.A.	N.D.	
		BBP	N.A.	N.D.	
		DEHP	N.A.	N.D.	
59	LED	Pb	BL	/	PASS
		Cd	BL	/	
		Hg	BL	/	
		Cr(Cr(VI) )	BL	/	
		Br(PBBs&PBDEs)	BL	/	
		DBP	N.A.	N.D.	
		BBP	N.A.	N.D.	
		DEHP	N.A.	N.D.	
60	Silvery metal shell	Pb	BL	/	PASS
		Cd	BL	/	
		Hg	BL	/	
		Cr(Cr(VI) )	BL	/	
		Br(PBBs&PBDEs)	N.A.	/	
		DBP	N.A.	/	
		BBP	N.A.	/	
		DEHP	N.A.	/	
		DIBP	N.A.	/	





# Test Report

Report No.: 18300RC30519401

Page 23 of 40

Sample No.	Sample Description	Tested Items	XRF Screening Test Unit (mg/kg)	Chemical Test Unit (mg/kg)	Conclusion
61	Copper-colored metal ring	Pb	BL	/	PASS
		Cd	BL	/	
		Hg	BL	/	
		Cr(Cr(VI) )	BL	/	
		Br(PBBs&PBDEs)	N.A.	/	
		DBP	N.A.	/	
		BBP	N.A.	/	
		DEHP	N.A.	/	
62	Silvery metal column	Pb	BL	/	PASS
		Cd	BL	/	
		Hg	BL	/	
		Cr(Cr(VI) )	BL	/	
		Br(PBBs&PBDEs)	N.A.	/	
		DBP	N.A.	/	
		BBP	N.A.	/	
		DEHP	N.A.	/	
63	Copper-colored metal coil	Pb	BL	/	PASS
		Cd	BL	/	
		Hg	BL	/	
		Cr(Cr(VI) )	BL	/	
		Br(PBBs&PBDEs)	N.A.	/	
		DBP	N.A.	/	
		BBP	N.A.	/	
		DEHP	N.A.	/	
		DIBP	N.A.	/	



# Test Report

Report No.: 18300RC30519401

Page 24 of 40

Sample No.	Sample Description	Tested Items	XRF Screening Test Unit (mg/kg)	Chemical Test Unit (mg/kg)	Conclusion
64	Silvery metal sheet	Pb	BL	/	PASS
		Cd	BL	/	
		Hg	BL	/	
		Cr(Cr(VI) )	BL	/	
		Br(PBBs&PBDEs)	N.A.	/	
		DBP	N.A.	/	
		BBP	N.A.	/	
		DEHP	N.A.	/	
		DIBP	N.A.	/	
65	Silvery metal sheet	Pb	BL	/	PASS
		Cd	BL	/	
		Hg	BL	/	
		Cr(Cr(VI) )	BL	/	
		Br(PBBs&PBDEs)	N.A.	/	
		DBP	N.A.	/	
		BBP	N.A.	/	
		DEHP	N.A.	/	
		DIBP	N.A.	/	
66	Translucent plastic sheet	Pb	BL	/	PASS
		Cd	BL	/	
		Hg	BL	/	
		Cr(Cr(VI) )	BL	/	
		Br(PBBs&PBDEs)	BL	/	
		DBP	N.A.	N.D.	
		BBP	N.A.	N.D.	
		DEHP	N.A.	N.D.	
		DIBP	N.A.	N.D.	



# Test Report

Report No.: 18300RC30519401

Page 25 of 40

Sample No.	Sample Description	Tested Items	XRF Screening Test Unit (mg/kg)	Chemical Test Unit (mg/kg)	Conclusion
67	Silvery metal soldering tin	Pb	BL	/	PASS
		Cd	BL	/	
		Hg	BL	/	
		Cr(Cr(VI) )	BL	/	
		Br(PBBs&PBDEs)	N.A.	/	
		DBP	N.A.	/	
		BBP	N.A.	/	
		DEHP	N.A.	/	
68	Beige plastic block	Pb	BL	/	PASS
		Cd	BL	/	
		Hg	BL	/	
		Cr(Cr(VI) )	BL	/	
		Br(PBBs&PBDEs)	BL	/	
		DBP	N.A.	N.D.	
		BBP	N.A.	N.D.	
		DEHP	N.A.	N.D.	
69	Black plastic ring	Pb	BL	/	PASS
		Cd	BL	/	
		Hg	BL	/	
		Cr(Cr(VI) )	BL	/	
		Br(PBBs&PBDEs)	BL	/	
		DBP	N.A.	N.D.	
		BBP	N.A.	N.D.	
		DEHP	N.A.	N.D.	
DIBP	N.A.	N.D.			





# Test Report

Report No.: 18300RC30519401

Page 26 of 40

Sample No.	Sample Description	Tested Items	XRF Screening Test Unit (mg/kg)	Chemical Test Unit (mg/kg)	Conclusion
70	Black plastic block	Pb	BL	/	PASS
		Cd	BL	/	
		Hg	BL	/	
		Cr(Cr(VI) )	BL	/	
		Br(PBBs&PBDEs)	BL	/	
		DBP	N.A.	N.D.	
		BBP	N.A.	N.D.	
		DEHP	N.A.	N.D.	
		DIBP	N.A.	N.D.	
71	White plastic block	Pb	BL	/	PASS
		Cd	BL	/	
		Hg	BL	/	
		Cr(Cr(VI) )	BL	/	
		Br(PBBs&PBDEs)	BL	/	
		DBP	N.A.	N.D.	
		BBP	N.A.	N.D.	
		DEHP	N.A.	N.D.	
		DIBP	N.A.	N.D.	
72	Copper-colored metal ring	Pb	BL	/	PASS
		Cd	BL	/	
		Hg	BL	/	
		Cr(Cr(VI) )	BL	/	
		Br(PBBs&PBDEs)	N.A.	/	
		DBP	N.A.	/	
		BBP	N.A.	/	
		DEHP	N.A.	/	
		DIBP	N.A.	/	



# Test Report

Report No.: 18300RC30519401

Page 27 of 40

Sample No.	Sample Description	Tested Items	XRF Screening Test Unit (mg/kg)	Chemical Test Unit (mg/kg)	Conclusion
73	Silvery aluminum plastic film	Pb	BL	/	PASS
		Cd	BL	/	
		Hg	BL	/	
		Cr(Cr(VI) )	BL	/	
		Br(PBBs&PBDEs)	BL	/	
		DBP	N.A.	N.D.	
		BBP	N.A.	N.D.	
		DEHP	N.A.	N.D.	
74	Black foam pad	Pb	BL	/	PASS
		Cd	BL	/	
		Hg	BL	/	
		Cr(Cr(VI) )	BL	/	
		Br(PBBs&PBDEs)	BL	/	
		DBP	N.A.	N.D.	
		BBP	N.A.	N.D.	
		DEHP	N.A.	N.D.	
75	White paper sheet	Pb	BL	/	PASS
		Cd	BL	/	
		Hg	BL	/	
		Cr(Cr(VI) )	BL	/	
		Br(PBBs&PBDEs)	BL	/	
		DBP	N.A.	N.D.	
		BBP	N.A.	N.D.	
		DEHP	N.A.	154	
DIBP	N.A.	N.D.			



# Test Report

Report No.: 18300RC30519401

Page 28 of 40

Sample No.	Sample Description	Tested Items	XRF Screening Test Unit (mg/kg)	Chemical Test Unit (mg/kg)	Conclusion
76	Copper-colored metal pin	Pb	BL	/	PASS
		Cd	BL	/	
		Hg	BL	/	
		Cr(Cr(VI) )	BL	/	
		Br(PBBs&PBDEs)	N.A.	/	
		DBP	N.A.	/	
		BBP	N.A.	/	
		DEHP	N.A.	/	
77	White plastic scarfskin	Pb	BL	/	PASS
		Cd	BL	/	
		Hg	BL	/	
		Cr(Cr(VI) )	BL	/	
		Br(PBBs&PBDEs)	BL	/	
		DBP	N.A.	N.D.	
		BBP	N.A.	N.D.	
		DEHP	N.A.	N.D.	
78	Silvery metal socket	Pb	BL	/	PASS
		Cd	BL	/	
		Hg	BL	/	
		Cr(Cr(VI) )	X	Negative	
		Br(PBBs&PBDEs)	N.A.	/	
		DBP	N.A.	/	
		BBP	N.A.	/	
		DEHP	N.A.	/	
DIBP	N.A.	/			





# Test Report

Report No.: 18300RC30519401

Page 29 of 40

Sample No.	Sample Description	Tested Items	XRF Screening Test Unit (mg/kg)	Chemical Test Unit (mg/kg)	Conclusion
79	White plastic wire sleeve	Pb	BL	/	PASS
		Cd	BL	/	
		Hg	BL	/	
		Cr(Cr(VI) )	BL	/	
		Br(PBBs&PBDEs)	BL	/	
		DBP	N.A.	N.D.	
		BBP	N.A.	N.D.	
		DEHP	N.A.	N.D.	
80	Black plastic jacket	Pb	BL	/	PASS
		Cd	BL	/	
		Hg	BL	/	
		Cr(Cr(VI) )	BL	/	
		Br(PBBs&PBDEs)	BL	/	
		DBP	N.A.	N.D.	
		BBP	N.A.	N.D.	
		DEHP	N.A.	N.D.	
81	Red plastic jacket	Pb	BL	/	PASS
		Cd	BL	/	
		Hg	BL	/	
		Cr(Cr(VI) )	BL	/	
		Br(PBBs&PBDEs)	BL	/	
		DBP	N.A.	N.D.	
		BBP	N.A.	N.D.	
		DEHP	N.A.	N.D.	
		DIBP	N.A.	N.D.	



# Test Report

Report No.: 18300RC30519401

Page 30 of 40

**Note:**

- The screening results are only used for reference.
  - When conducting the test for PBBs&PBDEs, XRF was introduced to screen Br Exclusively; When conducting the test for Hexavalent Chromium, XRF was introduced to screen Chromium exclusively.
  - BL = Under the XRF screening limit
  - OL = Further chemical test will be conducted while result is above the screening limit
  - X= The symbol "X" marks the region where further investigation is necessary
  - LOD= Detection limit
  - MDL = Method Detection Limit
  - N.A. = Not Applicable
  - N.D. = Not Detected (<MDL)
  - /=Not tested
  - 1mg/kg = 1ppm = 0.0001%
  - $\mu\text{g}/\text{cm}^2$  = microgramme per square centimeter
  - "---"=
- a. -Negative = Absence of Cr(VI) , the detected Cr(VI) concentration in the boiling water extraction solution is less than  $0.10\mu\text{g}/\text{cm}^2$ .
- b. -Positive = Presence of Cr(VI), the detected Cr(VI) concentration in the boiling water extraction solution is equal to or greater than  $0.13\mu\text{g}/\text{cm}^2$ .
- c. The result is between  $0.10\mu\text{g}/\text{cm}^2$  with  $0.13\mu\text{g}/\text{cm}^2$  is considered to be inconclusive-unavoidable coating variations may influence the determination.
- ▼=The resubmitted date of test sample 31 is 2023.12.11.
- \*= According to the client's statement, the material of the sample(s) falls into exemption items 6(c) according to EU RoHS Directive 2011/65/EU: Copper alloy containing up to 4% Lead by weight.



# Test Report

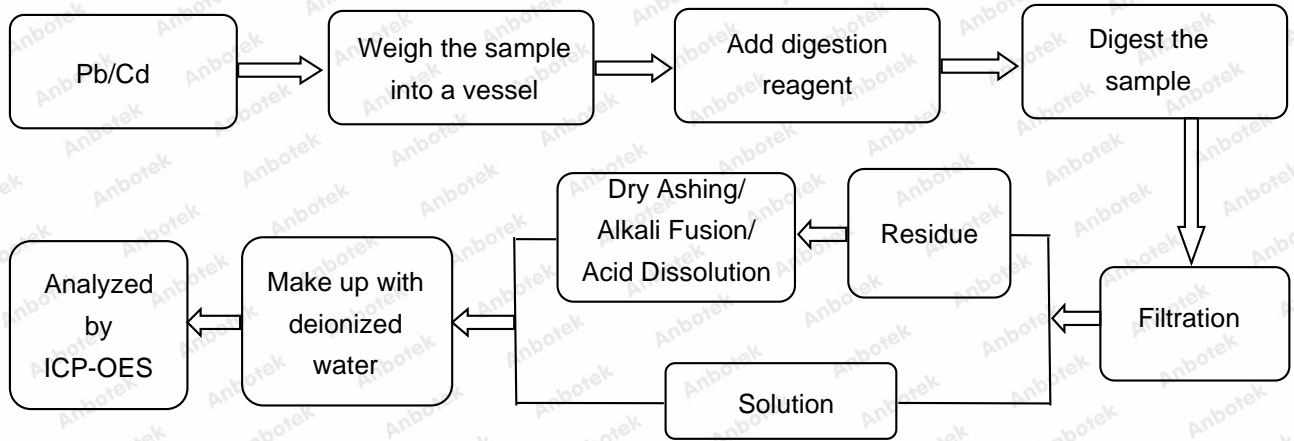
Report No.: 18300RC30519401

Page 31 of 40

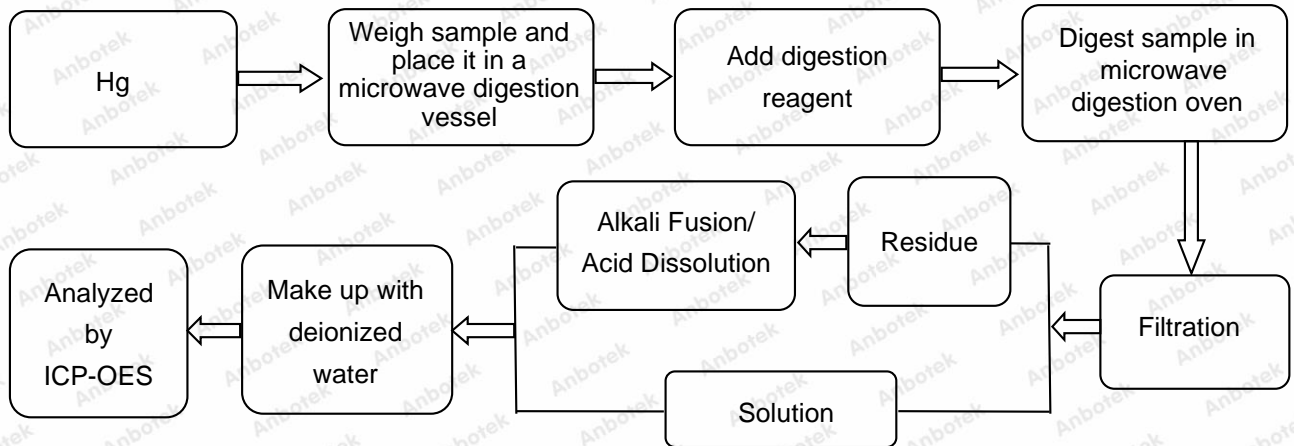
**Test Process:**

The sample(s) had been dissolved totally tested for Lead, Cadmium, Mercury.

◆ IEC 62321-5:2013



◆ IEC 62321-4:2013+AMD1:2017



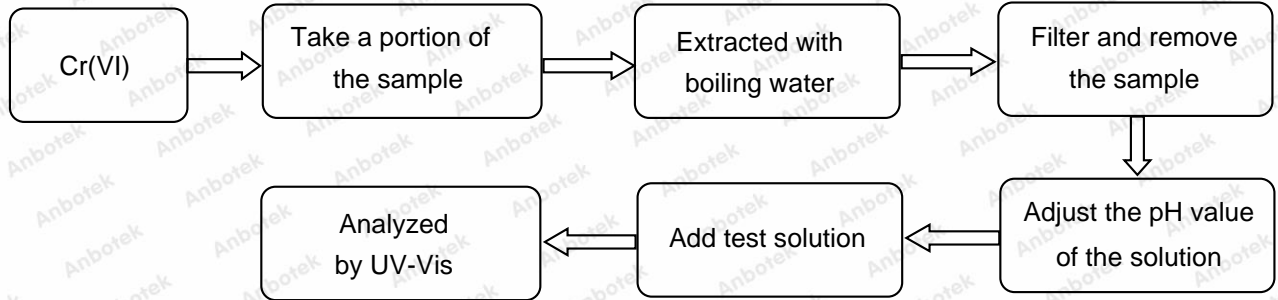


# Test Report

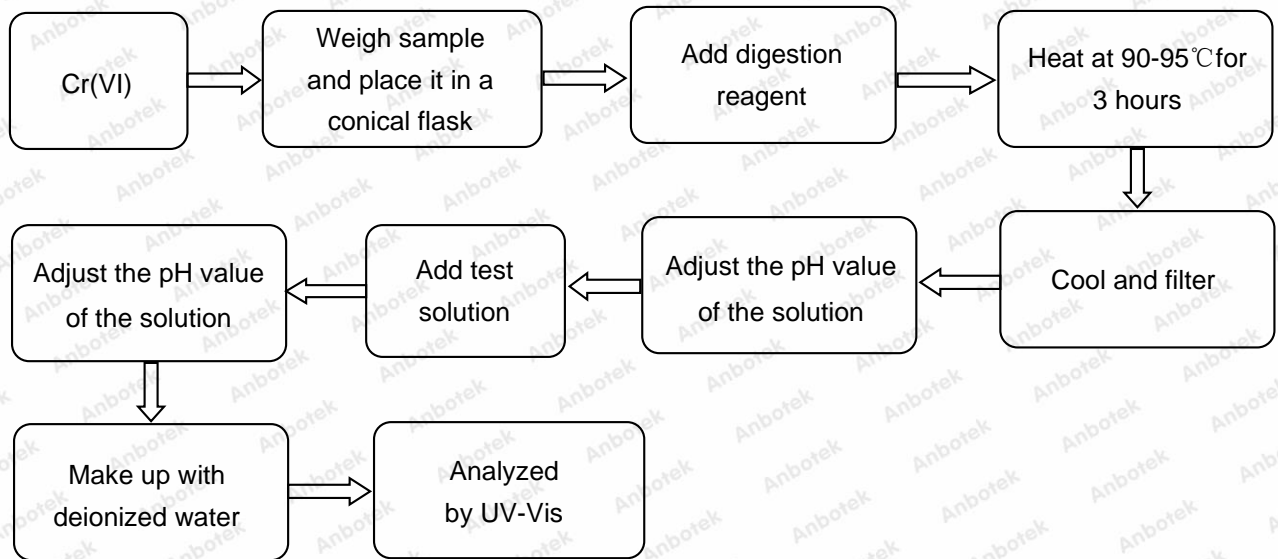
Report No.: 18300RC30519401

Page 32 of 40

◆ IEC 62321-7-1:2015



◆ IEC 62321-7-2:2017

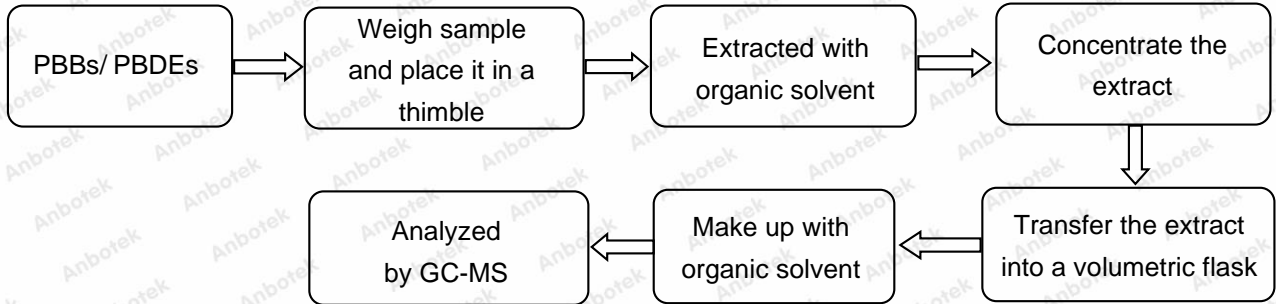


# Test Report

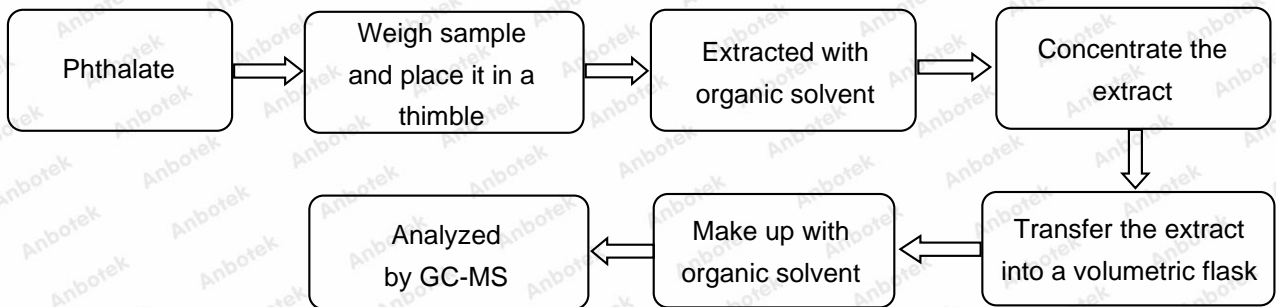
Report No.: 18300RC30519401

Page 33 of 40

◆ IEC 62321-6:2015



◆ IEC 62321-8:2017





# Test Report

Report No.: 18300RC30519401

Page 34 of 40

## Photograph of Sample





# Test Report

Report No.: 18300RC30519401

Page 35 of 40



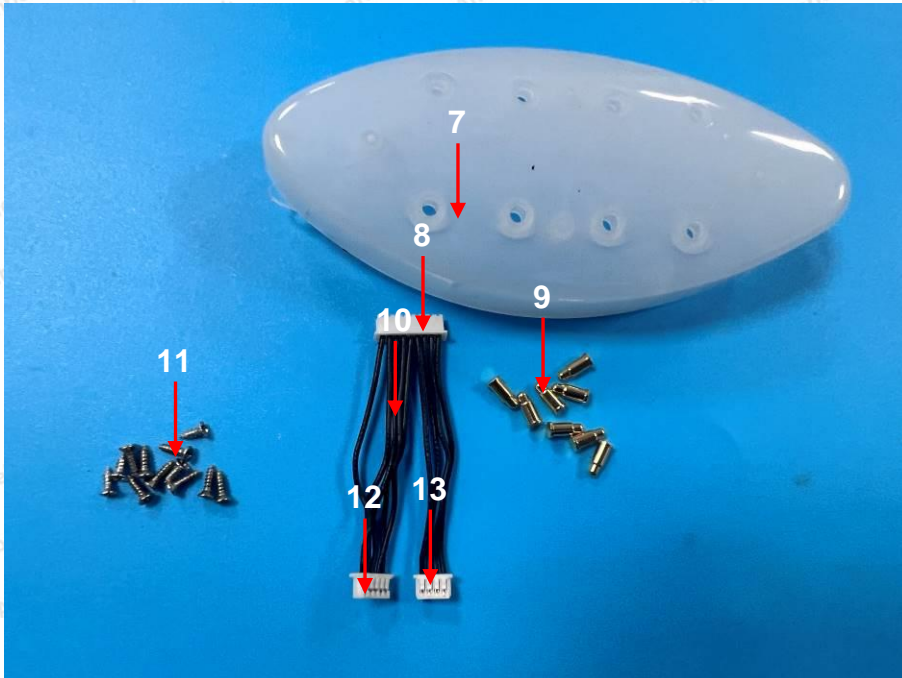
Photo(s) of the tested component(s)



# Test Report

Report No.: 18300RC30519401

Page 36 of 40

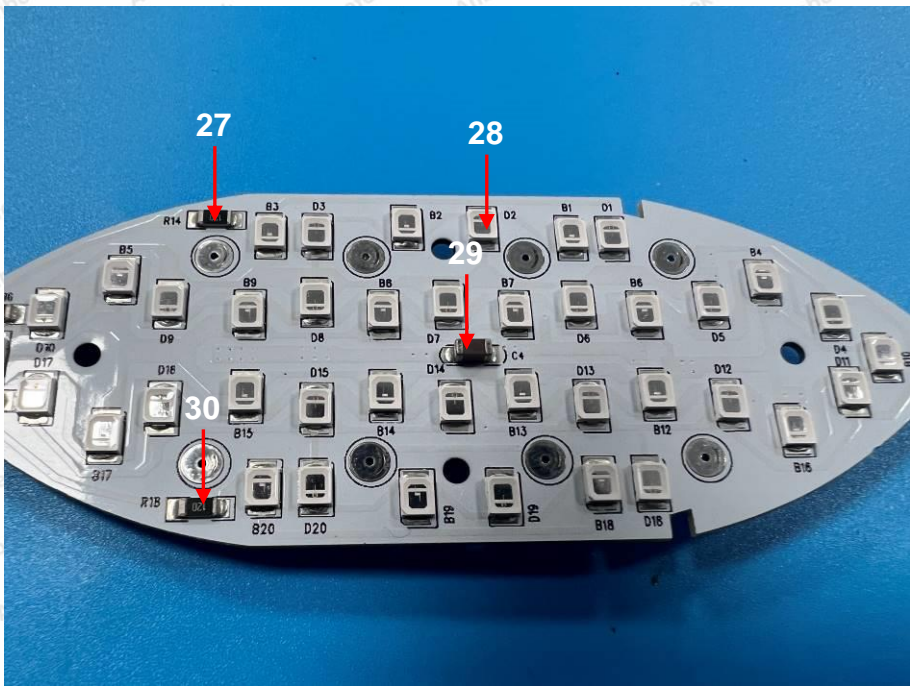
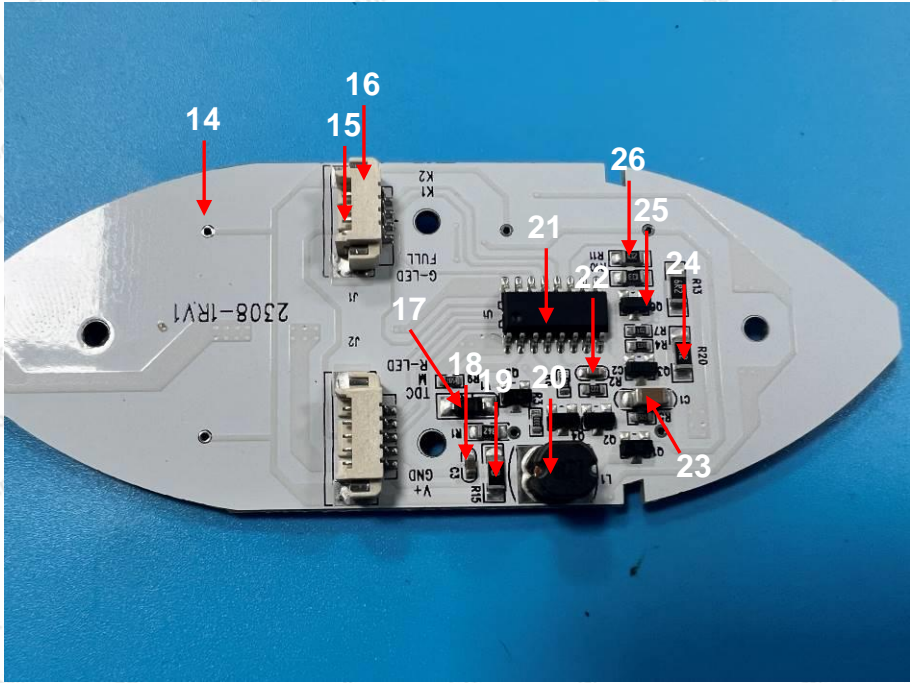




# Test Report

Report No.: 18300RC30519401

Page 37 of 40

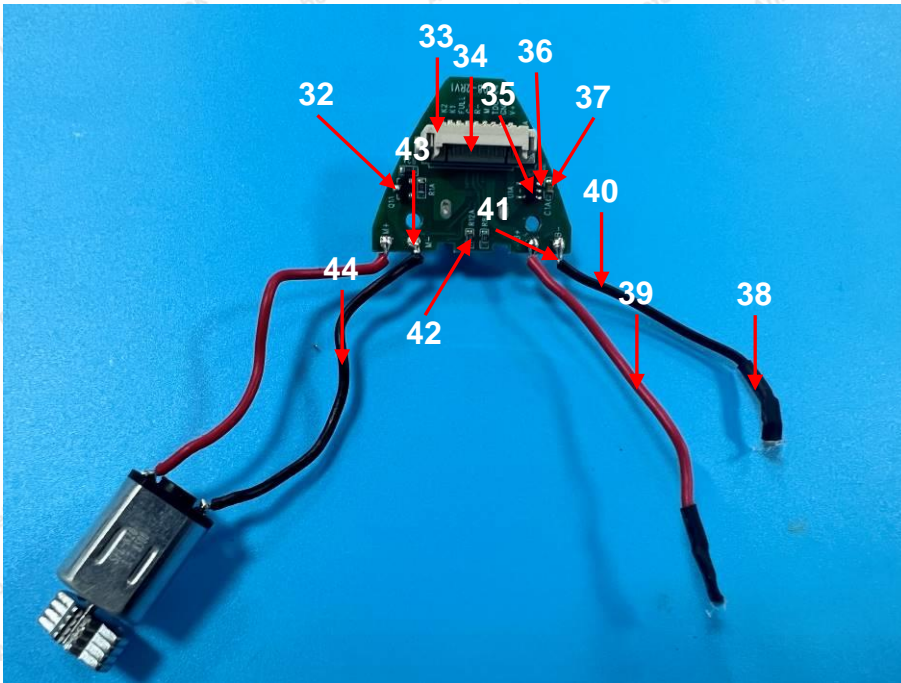
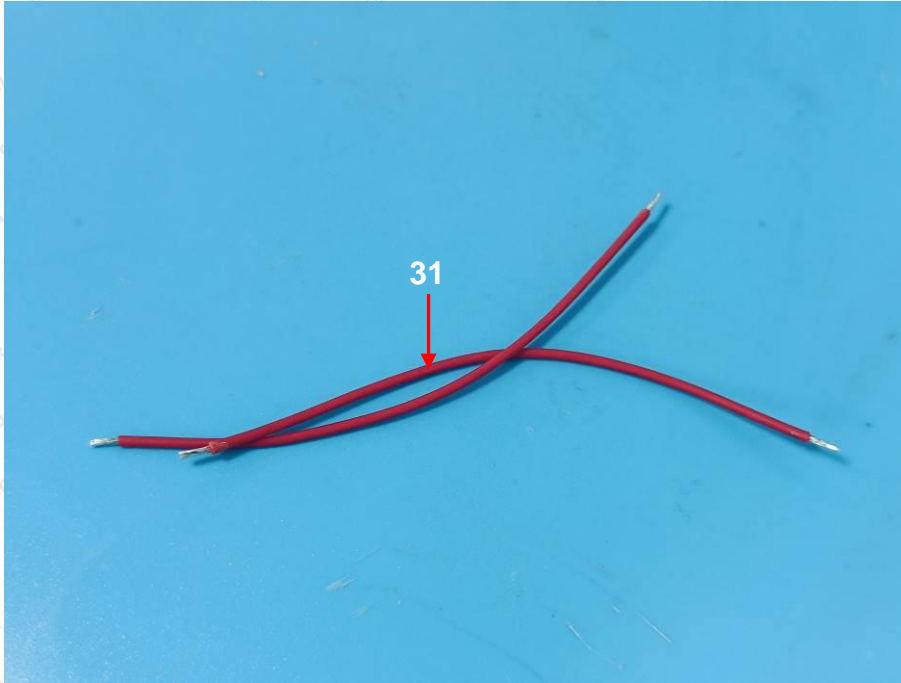




# Test Report

Report No.: 18300RC30519401

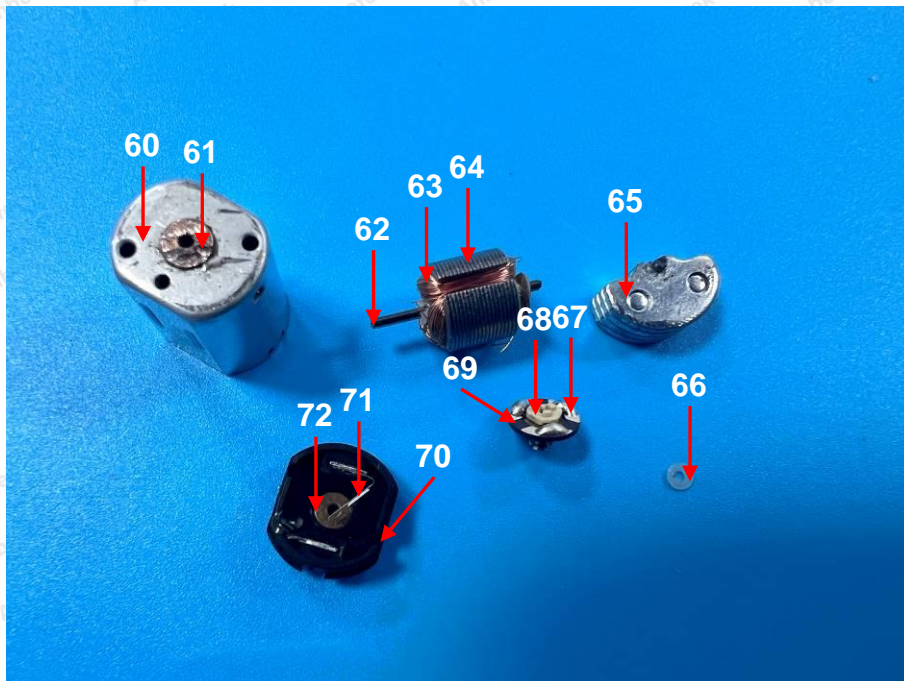
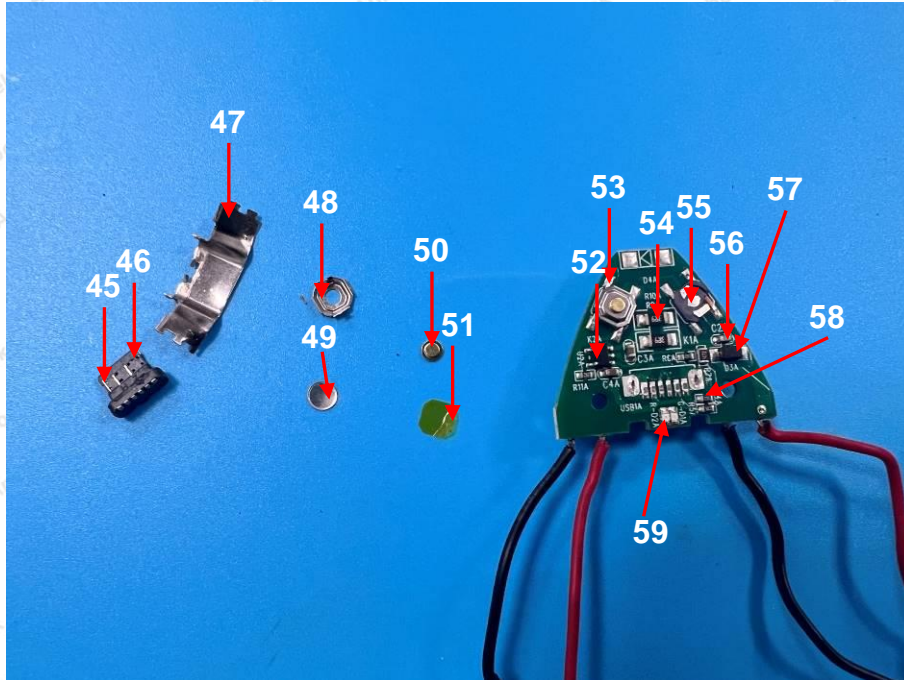
Page 38 of 40



# Test Report

Report No.: 18300RC30519401

Page 39 of 40

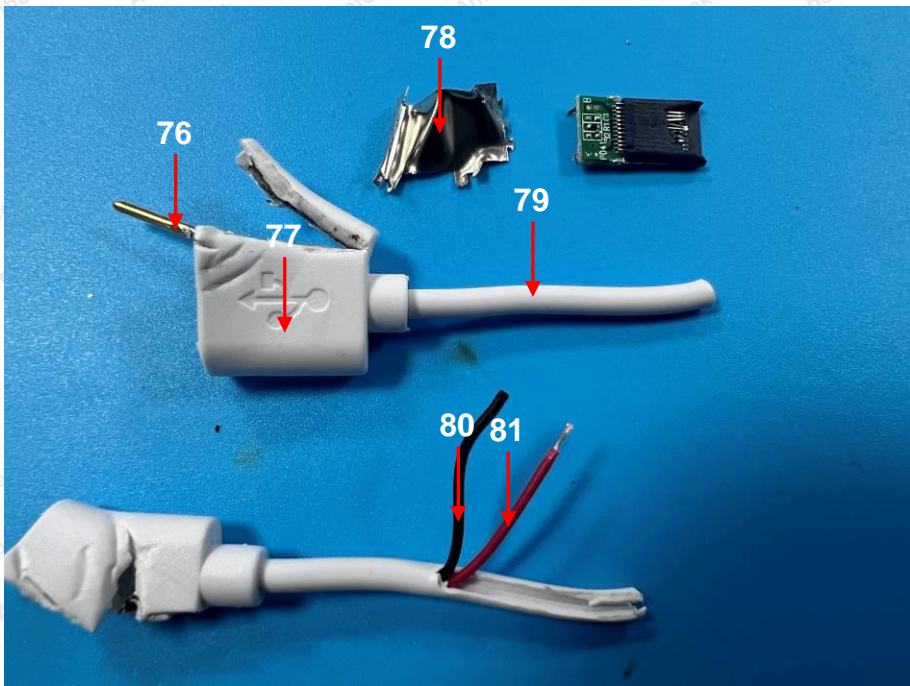
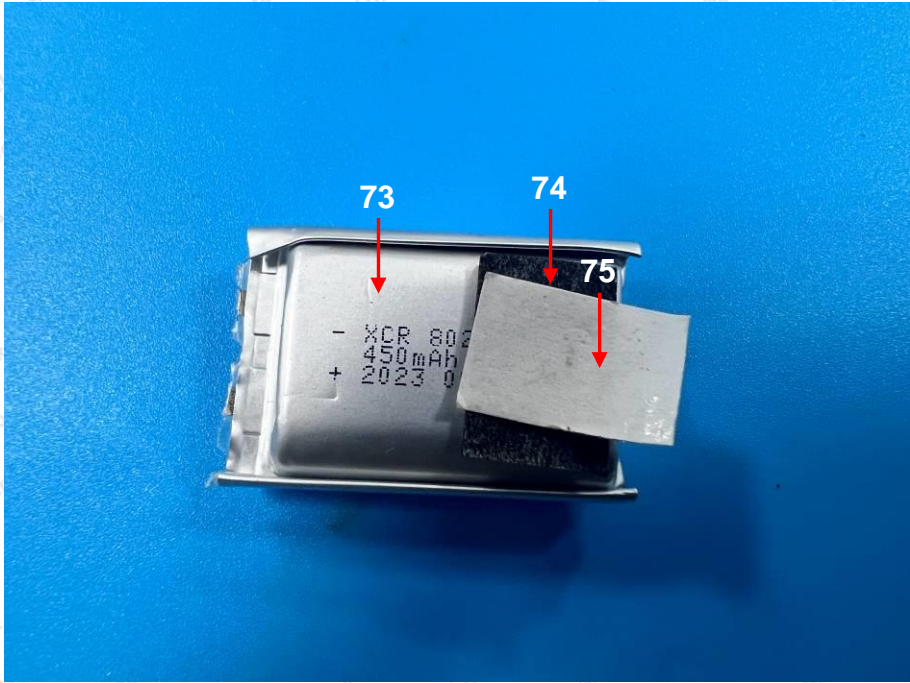




# Test Report

Report No.: 18300RC30519401

Page 40 of 40



\*\*\*\* End of Report \*\*\*\*

The test report is effective only with both signature and specialized stamp. The result(s) shown in this report refer only to the sample(s) tested. Without written approval of Anbotek, this report can't be reproduced except in full.

